

DAMMON  
ENGINEERING, INC.

CHIEF ENGINEER  
ENAMETT  
DAMMON, P.E.

CHIEF ARCHITECT  
ROBERT  
WILTSE

554 OLD SPANISH TRAIL  
SLIDELL, LA. 70458  
OFFICE: 985-649-5832  
FAX: 985-641-5950

WEBSITE:  
WWW.DAMMONENGINEERING.COM  
EMAIL:  
DAMMONENR@BELL.SOUTH.NET

ARCHITECTURE  
ENGINEERING  
STUDIES  
PLANNING  
INVESTIGATION  
EXPERT WITNESS

SLIDELL  
ATHLETIC CLUB

BOB THIRSTRUP  
OAK SAC PROPERTY, LLC  
OAK HARBOR BLVD.  
SLIDELL, LA  
70458

REFLECTED  
CEILING PLAN

REV:

SCALE: AS NOTED

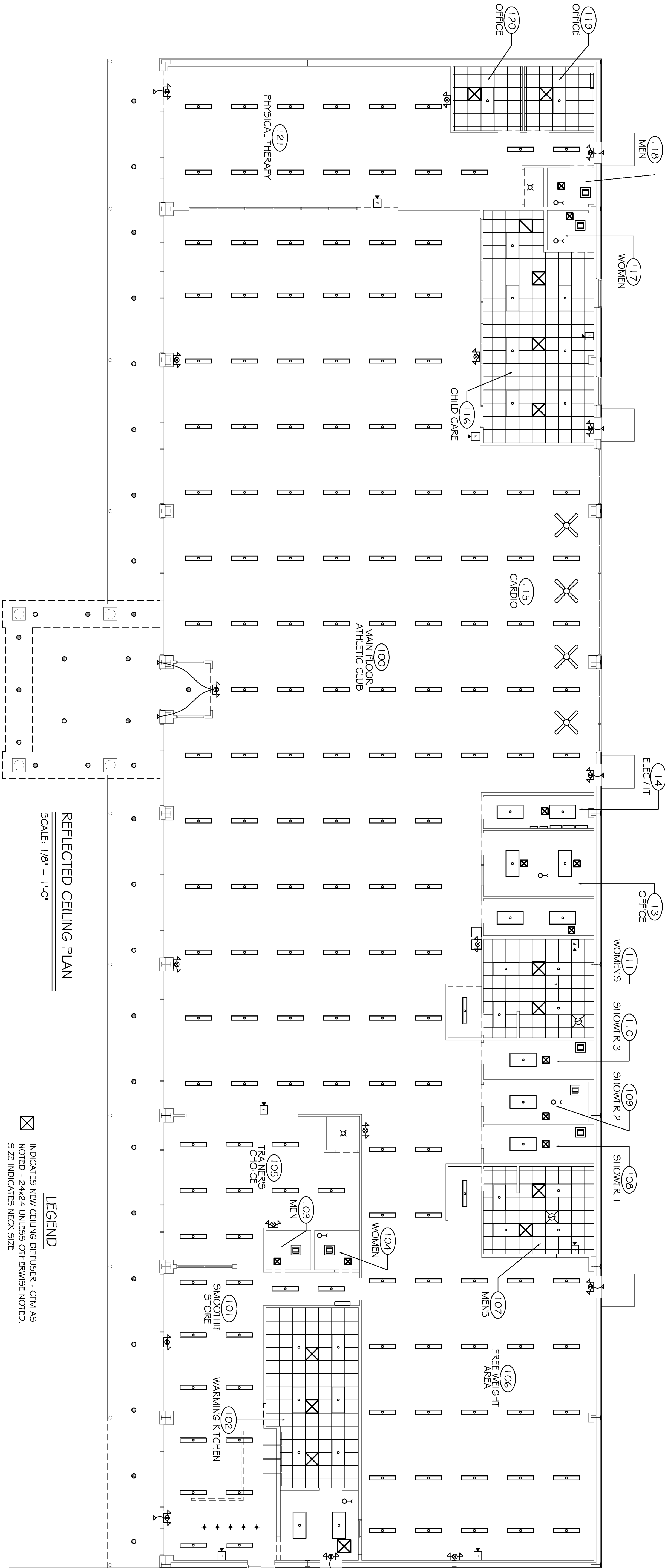
JOB#: 2121

DATE: 06-22-11

SHEET

A-5

OF 1



REFLECTED CEILING PLAN

SCALE: 1/8" = 1'-0"

LEGEND

- INDICATES NEW CEILING DIFFUSER - CFM AS NOTED - 24x24 UNLESS OTHERWISE NOTED. SIZE INDICATES NECK SIZE
- INDICATES NEW RETURN AIR CEILING GRILLE OF SIZE INDICATED. TRANSFER DUCT TO BE RECTANGULAR AS INDICATED.
- VENT / LIGHT COMBINATION
- 2x4 RECESSED FLUORESCENT
- 48" SUSPENDED LOW BAY FLUORESCENT WITH REFLECTOR
- C.G. MTD. INCANDESCENT DOWNLIGHT FIXTURE
- SUSPENDED PENDANT DOWNLIGHT FIXTURE
- RECESSED 7/8" METAL HALIDE FIXED DOWNLIGHT ON PHOTOCELL
- PULL CHAIN INCANDESCENT FIXTURE LOCATED ABOVE DECK
- VENT / LIGHT COMBO INCANDESCENT LAMP
- WALL MTD. HALOGEN EMER. LIGHT W/ 90 MIN. BATT. BACKUP
- WALL MTD. HALOGEN EMER. / EXIT W/ BATT. BACKUP
- WALL MTD. HALOGEN EMER. / EXIT W/ 90 MIN. BATT. BACKUP AND REMOTE EXTERIOR BULB
- CEILING FAN